

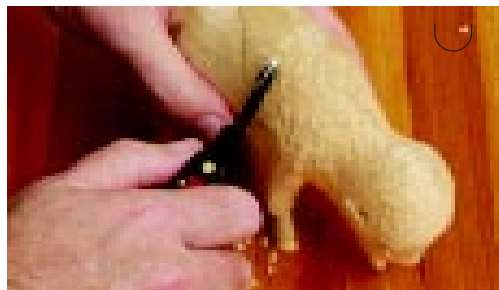
Carvin' Jack™ by Flexcut is a complete carving kit in your pocket!

- Great for camping!
- Includes its own Flexcut Slipstop™ and Flexcut Gold™ polishing compound.
- Complete instructions for operating and maintaining the sharpest edge possible.
- Each razor edge is honed and locks securely in both the opened and closed positions.
- All blades are made of Flexcut's high-carbon steel, which made their tools famous.



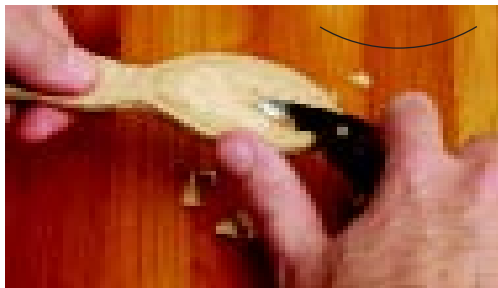
Detail Knife

Its fine point can be used for detailing delicate areas or quickly removing wood from a convex surface as you would with any whittling knife.



Straight Gouge

Gouges are used for modeling surfaces or creating different textures. It can also be used for carving printmaking woodcuts.



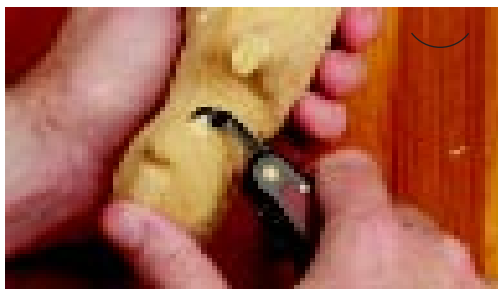
Hook Knife

The hook knife is designed for carving in hollow areas where a straight blade can't reach. It's ideal for hollowing spoons or roughing out larger amounts of waste wood.



V-Scorp

The V-Scorp's sharp corners leave a clean line of demarcation between two adjacent surfaces, much the same as outlining with a pencil.



Gouge Scorp

Scorps, by their nature, are right-angled gouges. Their very short turning radius allows them to carve very narrow, deep recesses, similar to spoon gouges, only better.



Chisel

This handy carpenter's tool is great for setting a hinge, carving lettering or smoothing off hard-to-reach convex surfaces.



6 51646 52091 1

www.flexcut.com

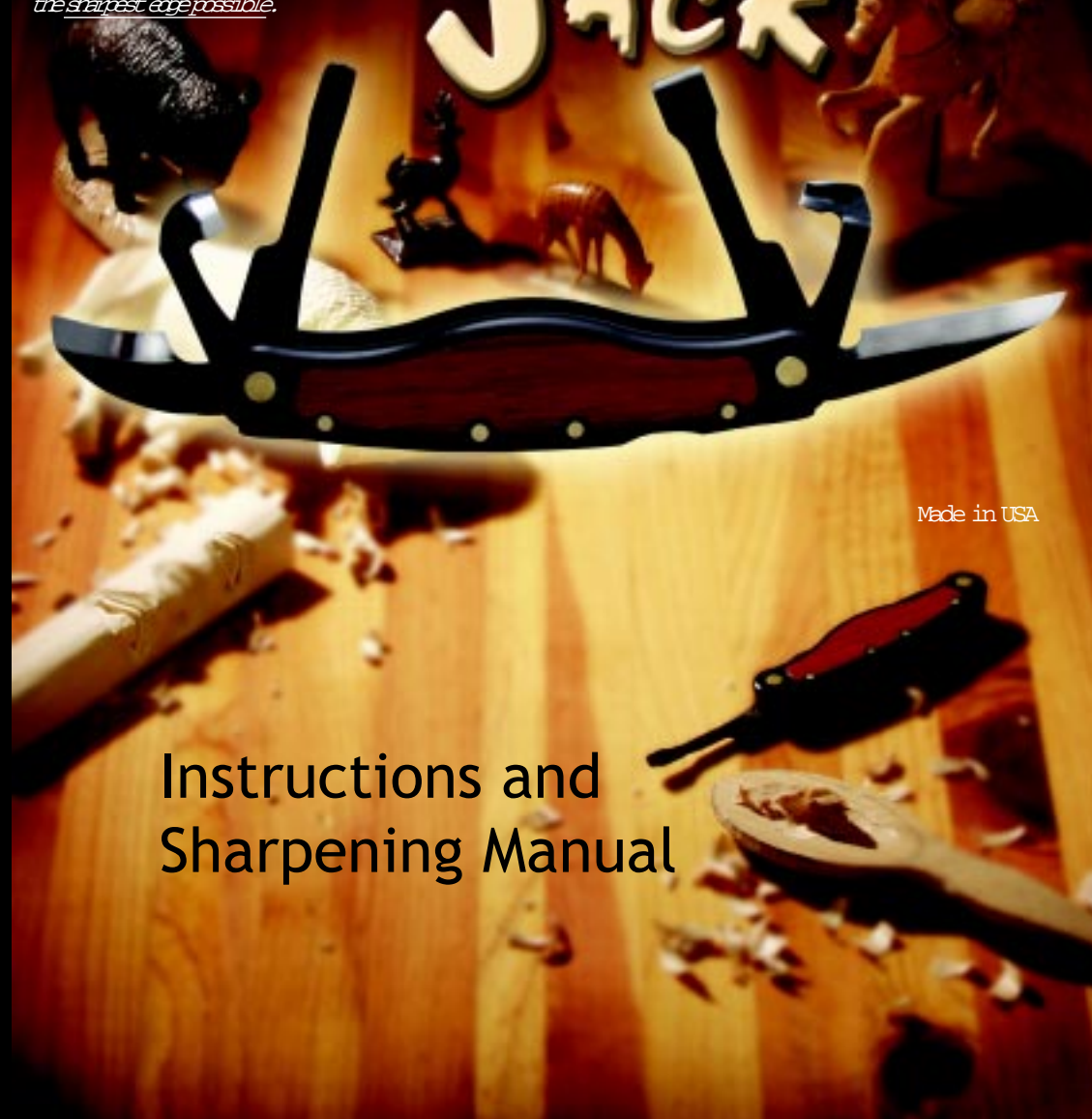


Flexcut
CARVING TOOLS

*Includes a Flexcut Slipstop™,
Flexcut Gold™ polishing compound
and complete instructions for maintaining
the sharpest edge possible.*

A complete carving kit in your pocket!

CARVIN' JACK™



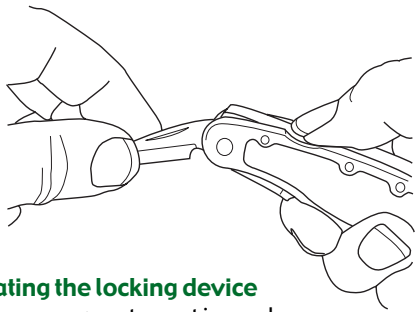
Made in USA

Instructions and Sharpening Manual



www.flexcut.com

Thank you for your purchase of Carvin' Jack, the world's first multiple-blade jackknife designed specifically for woodcarvers. We put great effort into manufacturing innovative, quality carving tools designed to give you a lifetime of enjoyment. Our reputation for long-lasting, razor-sharp edges is well known throughout the world. The information contained in this manual is designed to provide you with the basic knowledge for operating the different blades contained in your new knife. We also provide routine maintenance tips. Reading over this material will ensure that you know how to keep your knife in top working order. Performing this maintenance will keep the blades working at their maximum efficiency. More detailed information can be found at your authorized Flexcut dealer, flexcut.com or local library.



Operating the locking device

Always use great caution when opening or closing any blade in the knife. **They are extremely sharp!** After making your blade choice, use the embossed nail nick to pull it out until the blade locks into place. **Note: The V-scorp does not have a nail nick, and can be pulled out by inserting your nail under the shank of the tool itself.** If any of the adjacent blades rotate out along with the blade you wish to use, push them back into the handle. The blade will only lock in place if the others are completely closed. For added safety, test the blade to ensure it is securely locked in position.

To unlock and close the blade into the handle, push down on the thumb recess on the back of the knife. When the blade releases, fold the blade completely back into the handle until its edge is safely covered. **While the lock is depressed, be careful not to push the blades that are already closed any deeper into the handle.** This can jam the locking mechanism.

Maintenance

The Carvin' Jack blades are made from high-carbon steel to offer the best possible edge for carving wood. The black oxide finish is added to make the blades rust-resistant, not rustproof. Keeping the knife in a dry environment will help prevent

spotting of rust. Wiping the blades with a thin coat of oil or wax can also be very good preventive maintenance.

The edge of each blade has been designed specifically for carving wood. Using them on other materials can dull the tool prematurely or even damage the edge. It is highly recommended that you use the SlipStrop™ and polishing compound included with your knife for routine stropping which will maintain the sharpest possible edge. The highly polished bevel on the blade is what creates its razor edge. Conventional sharpening stones can remove this polish and dull the tool prematurely. Only use sharpening stones for reshaping the edge and only when needed. Always repolish the bevel to bring it to its original sharpness. Please review the following stropping instructions.

Always avoid prying with any blade. Push the tool through the entire cut. Prying can damage the blade and void the warranty.

Stropping and keeping your tools sharp.

Your Flexcut Carvin' Jack has been pre-sharpened at the factory to a highly polished razor's edge. This creates an efficient, long-lasting cutting tool. Keeping each blade sharp requires some routine maintenance. This can most easily be done by periodically stropping both sides of the edge (outside and inside) with the SlipStrop™ and Flexcut Gold polishing compound. Sharpening stones should not be used for this routine maintenance. They are too coarse and will put scratches in the polish, reducing the sharpness.

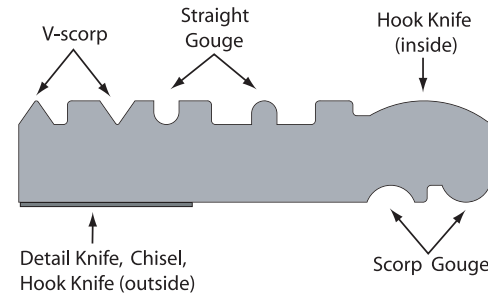
Edge tools have two converging surfaces joined at an apex. This apex is the cutting edge. Both of these surfaces need to be smooth and as polished as possible for the edge to be truly sharp. The more highly polished they are, the sharper the tool and the longer it will stay sharp.

These microscopic views show an edge before and after being polished.

The coarse texture left from a hard Arkansas stone creates fragile peaks on the edge that tend to break down more quickly as the tool is being used.

A smoother, polished edge is not only sharper, but will last longer due to its more uniform surface.

• When to use the strop.



A few moments taken to maintain the edge will save time and frustration and keep your tools in top working order. When carving in softer woods, a few strokes should be given to both the inside and outside edge

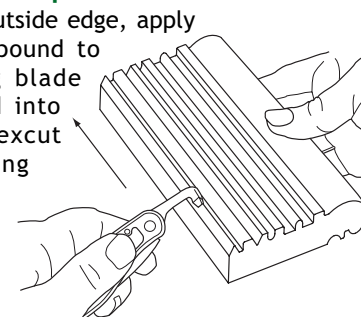
every 20 to 30 minutes. For carving harder materials, the frequency or number of strokes should be increased. When the tool begins to feel as if dragging through a cut, the tool should be stropped a number of times until the sharpness is restored. Waiting until the tool is actually dull will take much more time than doing this routinely as you carve.

• Using the SlipStrop

To strop the outside edge, apply the gold compound to the matching blade shape molded into the strop. Flexcut Gold™ polishing compound has been specially formulated to apply to the strop like a crayon and quickly polish hardened steels. The bevel of the tool should be placed as flat against the strop as possible. The tool is then pulled away from the edge to avoid digging into the strop. If the angle of the bevel against the strop is too high, it will round prematurely. If it is too low, the edge will not be properly abraded.

To strop the inside edge, once again, apply gold compound to the matching blade shape molded into the strop. The tool should be tilted up slightly as shown above, and once again, pulled away from the edge. Tilting the tool while it is stropped creates a slight secondary bevel on the inside of the tool to give the edge more durability and remove any burr.

Due to the softer nature of the material for stropping, each time the tool is polished the edge



becomes slightly rounded. Over a long period of time it will become so rounded that it no longer has an efficient cutting angle. The blade will then need to be reshaped using a sharpening stone or abrasive wheel to flatten the bevel back to its original angle. The edge should always be repolished to restore its sharpness and longevity. Flexcut Tool Co. Inc. offers a sharpening service for those who would like a factory edge restored to the knife.

Flexcut Limited Lifetime Warranty

We warrant products manufactured by Flexcut Tool Co. Inc., to be free of defects in material and workmanship for the life of the owner, and we will repair or replace with a new Flexcut carving tool, at our option, any Flexcut carving tool that is defective.

If you feel any Flexcut tool has failed due to a manufacturing defect, mail the tool with a written explanation of the problem to the address below. Please include your name, address, email address (if available), and daytime telephone number to:

**Flexcut Tool Co. Inc.
Tool Return
8105 Hawthorne Drive
Erie, PA 16509**

Flexcut Tool Co. Inc., does not warrant its product against normal wear and misuse. Flexcut carving tools are not intended to be used for prying, or as screwdrivers. If your carving tool is damaged due to misuse, our repair department can analyze the tool for factory specifications and type of damage. Repairs can be made for a reasonable fee.

This warranty gives you specific legal rights and you may have other rights that vary from state to state.

Consumer Awareness Statement

Flexcut Tool Co. Inc., manufactures edge tools for wood carving and each is tested to be razor sharp. Consumers should practice extreme caution when opening, using or sharpening any of our tools. Flexcut carving tools are intended to be used for carving wood and should not be used on other materials. They are not weapons and should not be used as such. If an injury occurs during use (or misuse) of any Flexcut carving tool, this is a risk that our customers assume and Flexcut Tool Co. Inc., can in no way be held accountable. Our customers should always exercise good safety practices and use our products wisely.